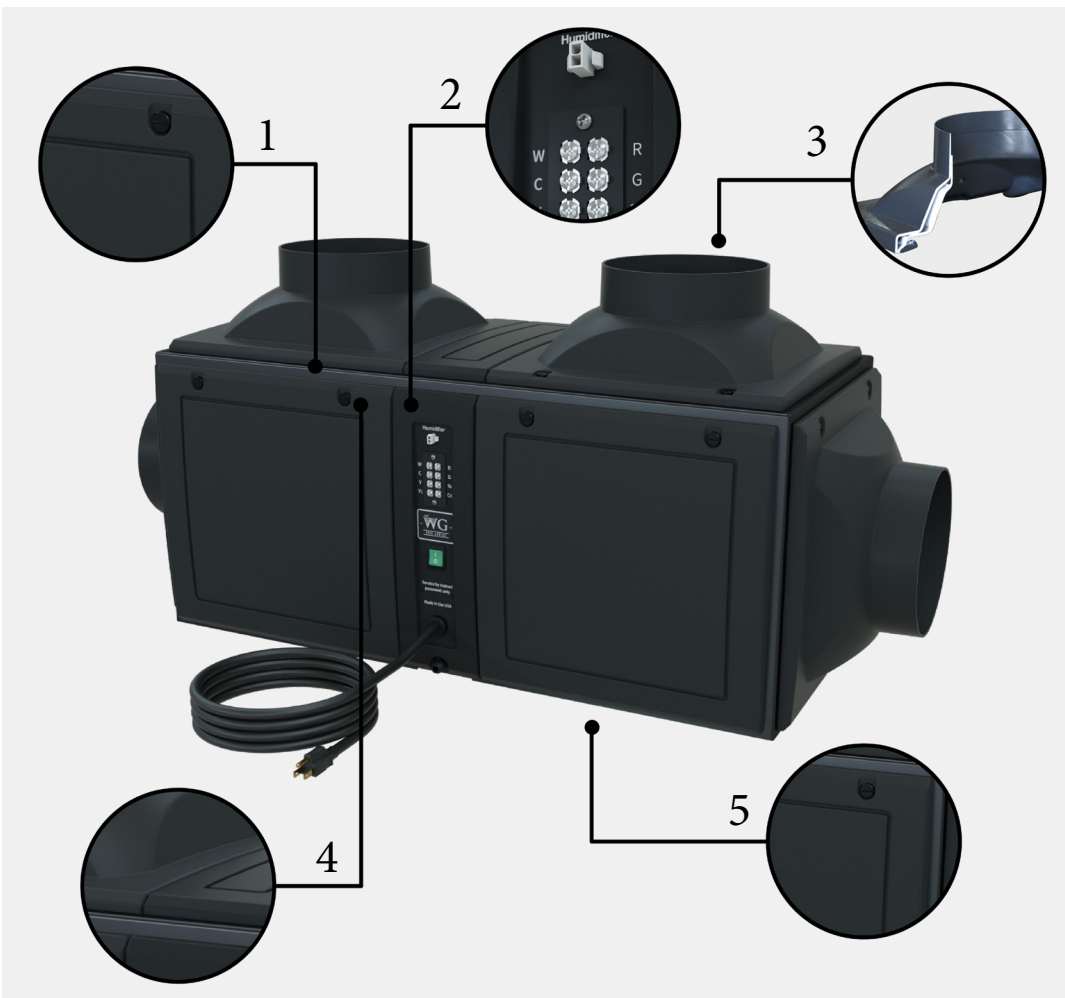


Pro Sentinel Series

Pro Ducted Cooling Systems

Protect your wine investment. Wine Guardian's Sentinel Series units are the **strongest and most energy-efficient** wine cellar cooling systems on the market. They provide **optimal temperature and humidity control** for both commercial and residential cellars with a design that allows for easy installation and service. The Pro Ducted systems are ideal for low-temperature air conditioning (52-70°F/11-21°C). Some applications include wine storage, document preservation, instrument storage, and long-term food storage.

Ducted systems are self-contained units that contain the evaporator, fans, compressor, condenser, and controls. This means that installation is entirely indoors. These units can be placed outside the cellar, so the system can cool the space while remaining unseen and unheard. An optional humidifier can be installed with the ability to achieve 55-65% relative humidity. For more information about our unit specifications, view our specification sheet.



- 1 Accessible**
 Innovative multi-panel design with integral fasteners for easy service and maintenance
- 2 Comprehensive**
 24-volt electronics allow for simple integration with smart homes or commercial building management systems
- 3 Efficient**
 Fully insulated cabinet and duct collars for protection in the most demanding environments
- 4 Bold**
 A stylish and contoured look for the modern homes of today's customers
- 5 Strong**
 The most durable wine cooling system on the market



Wine is your passion. *Preserving it is ours.*

Accessible

Composite multi-panel design with integral captive quarter-turn fasteners allows for **ease of access** and serviceability. Interchangeable duct collars and solid panels can be simply configured during installation.

Comprehensive

Our cooling systems offer a **wide range of control**, so you can match our units to your specific needs. Wine Guardian Pro systems use 24-volt electronics for easy integration with your existing smart home or commercial building management system.

Efficient

The Pro Ducted system chassis features up to **three times more insulation** than previous versions. New stronger, double wall insulated duct collars insulate 42% more to help reduce temperature loss and condensation even in the most demanding environments.

Bold

A **sleek and modern look** to compliment any wine cellar design.

Strong

The Sentinel Series is made of the highest UL rated composite material, features an all aluminum chassis, and contains coated coils to ensure **product durability**. It is five times stronger than our previous model. The unit's construction prevents dents and scratches from installation and shipping.

Options and Accessories:

- Water-cooled systems
- Humidification
- Electric heat
- Remote control, monitoring and sensing
- Duct kits and grilles
- Extended warranties

*Not all options are available for all units. Contact a distributor for more information.

Service Simplified

Wine Guardian Pro units come installed with service ports, appropriate pressure switches, and a refrigerant sight glass to allow for **faster and more efficient maintenance**.



Water-cooled systems available.



Wine Guardian Factory & Headquarters - USA:
7000 Performance Dr, North Syracuse, NY 13212
wineguardian.com | info@wineguardian.com
Designed and Built in the USA

Wine Guardian European Office:
Pestalozzistrasse 2, CH-8201 Schaffhausen,
Switzerland



Sentinel Series