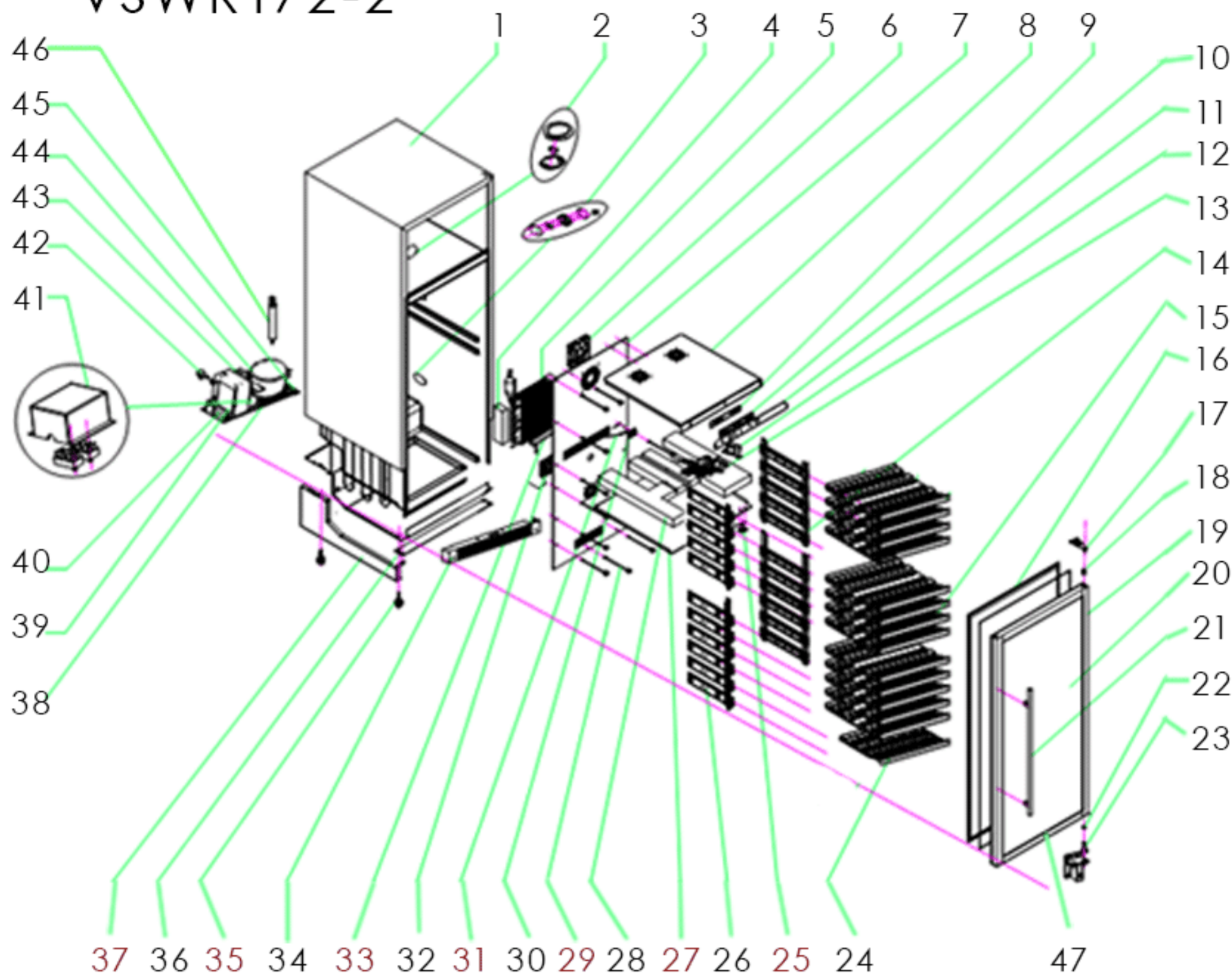


# VSWR172-2



- |    |                     |            |            |
|----|---------------------|------------|------------|
| 1  | Body                |            |            |
| 2  | Top LED Set         | V-TOPLED   |            |
| 3  | Side LED Set        | V-SIDELED  |            |
| 4  | Foam                |            |            |
| 5  | Evaporator          | V-EVAP1    |            |
| 6  | Fan                 | V-BIGFAN1  |            |
| 7  | Inner clapboard     |            |            |
| 8  | Upper cover         |            |            |
| 9  | Control Panel       | V-DISP2    |            |
| 10 | Plastic Button      | V-PBUTTON1 |            |
| 11 | Display Sticker     | V-STICKER2 |            |
| 12 | Transformer         | V-TRANS1   |            |
| 13 | Main Board          | V-MAIN1    |            |
| 14 | Shelf Bracket       |            |            |
| 15 | Big Rack            | V-MRACK1   |            |
| 16 | Door seal           | V-DSEAL1   |            |
| 17 | Right Top Hinge     | V-THINGE1  |            |
|    | Left Top Hinge      | V-THINGE2  |            |
| 18 | Door Spindle Sleeve | V-SPINDLE  |            |
| 19 | Door frame          |            |            |
| 20 | Glass               |            |            |
| 21 | Handle              |            |            |
| 22 | Gasket              |            |            |
| 23 | Lower Hinge         | V-BHINGE1  |            |
| 24 | Small rack          | V-BRACK1   |            |
| 25 | Sensor              |            | V-SENSOR   |
| 26 | Shelf Guide         |            | V-ROLLERST |
| 27 | Cover               |            |            |
| 28 | Foam                |            |            |
| 29 | Screw               |            |            |
| 30 | Sensor Cover        |            | V-SENCOVR  |
| 31 | Sensor              |            | V-SENSOR4  |
| 32 | Fan                 |            | V-BIGFAN1  |
| 33 | Water tank          |            |            |
| 34 | Right Hinge Grill   |            | V-GRILL1   |
|    | Left Hinge Grill    |            | V-GRILL2   |
| 35 | Adjustable Foot     |            | V-FOOT1    |
| 36 | Front-crossband     |            |            |
| 37 | Reinforce iron      |            |            |
| 38 | Splint              |            |            |
| 39 | Condenser           |            | V-COND1    |
| 40 | Power switch        |            | V-POWER    |
| 41 | Wire box            |            |            |
| 42 | Power cable         |            |            |
| 43 | Fan                 |            | V-BIGFAN2  |
| 44 | Compressor          |            | V-COMP4    |
| 45 | Water tank          |            | V-CONPAN   |
| 46 | Dry filter          |            | V-FILTER   |
| 47 | Lock                |            | V-LOCK     |